

GUIDE BOOK



OPENING HOURS

	PUBLIC	COLLECTIVE
M	9am - 10pm	7am - 11pm
T	9am - 10pm	7am - 11pm
W	9am - 10pm	7am - 11pm
T	9am - 10pm	7am - 11pm
F	9am - 10pm	7am - 11pm
S	9am - 10pm	7am - 11pm
S	9am - 10pm	7am - 11pm

CLASS TIMETABLE

Month: JUNE

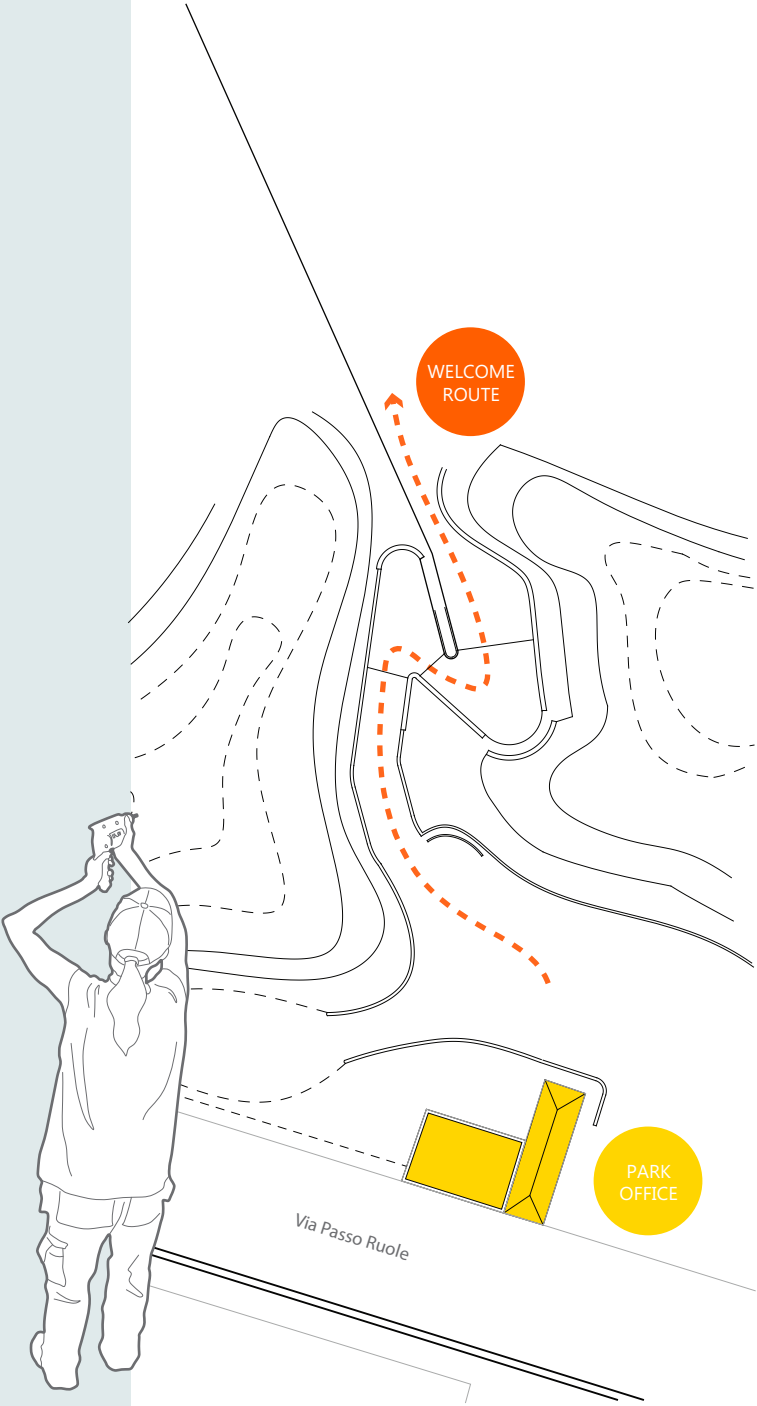
M	3D printing and exporting	STUDIO 1 - 20pp
T	Visual software and digital modelling	STUDIO 2 - 30pp
W	Carpentry and Tailoring	STUDIO 1 - 20pp
T	Fabrication techniques	ED STUDIO - 25pp
F	3D printing large scale	STUDIO 1 - 20pp
S	Visual scanning techniques	ED STUDIO - 35pp
S	Programming beginners	DATA STUDIO

WELCOME

The Makers Collective is an open source fabrication centre. Our mission statement is Innovation not Volume, Empowerment through Design.

There are three main studios in which parts for the city are fabricated. The studios hold daily workshops and classes that are open to all once registered as a free member of the collective. The park is open to the public from 9am- 10pm daily.

The real opportunity is to harness the inventive power of the city. As components are downloaded and re designed people have agency over their own environment, constituting to the evolutionary process.



01

WE ARE
HERE

STAZIONE LINGOTTO

LINGOTTO

THE COLLECTIVE

EXPO'67 SITE

WHERE ARE WE

The site is the old area of Fiat's aviation manufacture. In this area once stood the sheds for the production of aviation lubricants.

Adjacent is the Fiat Lingotto factory that has been converted into a shopping mall and university space.

There are 3 main predictions for the new city:

First is the possibility of creating components with 3D printers – not only does this allow for more complex geometries but it shatters the established laws of production. No longer do identical objects need to be churned out to control cost. Digital fabrication will introduce an era defined by individual control.

The second is the fluent transition between computer model and physical object, digital code can become physical material with the click of a mouse. It is a place not only for production but for learning. The Makers Collective is the centre of a fabrication-focused community, the collective will hold classes daily, workshops and social events. The fabrication society is classless, the education of digital living is open to everyone.

And the third is the social transition. Using intuitive software anyone can create, and upload a design online to be shared and customised by communities. A marketplace of downloadable and printable objects can redefine the social economy. This is a new form of empowerment, people can modify and change the world around them. Societies become lively, design driven interesting units of the 21st century urban fabric.



INNOVATION NOT VOLUME, EMPOWERMENT THROUGH DESIGN



NORTH PARK

- ① Station route
- ② Parking
- ③ Ramp up
- ④ Seating deck
- ⑤ ED studio
- ⑥ Show home
- ⑦ Data park
- ⑧ Grass area
- ⑨ Viewing deck
- ⑩ Data studio
- ⑪ Broadcasting

The North park is easily accessible from the Olympic Park pedestrian routes and the Stazione Lingotto.

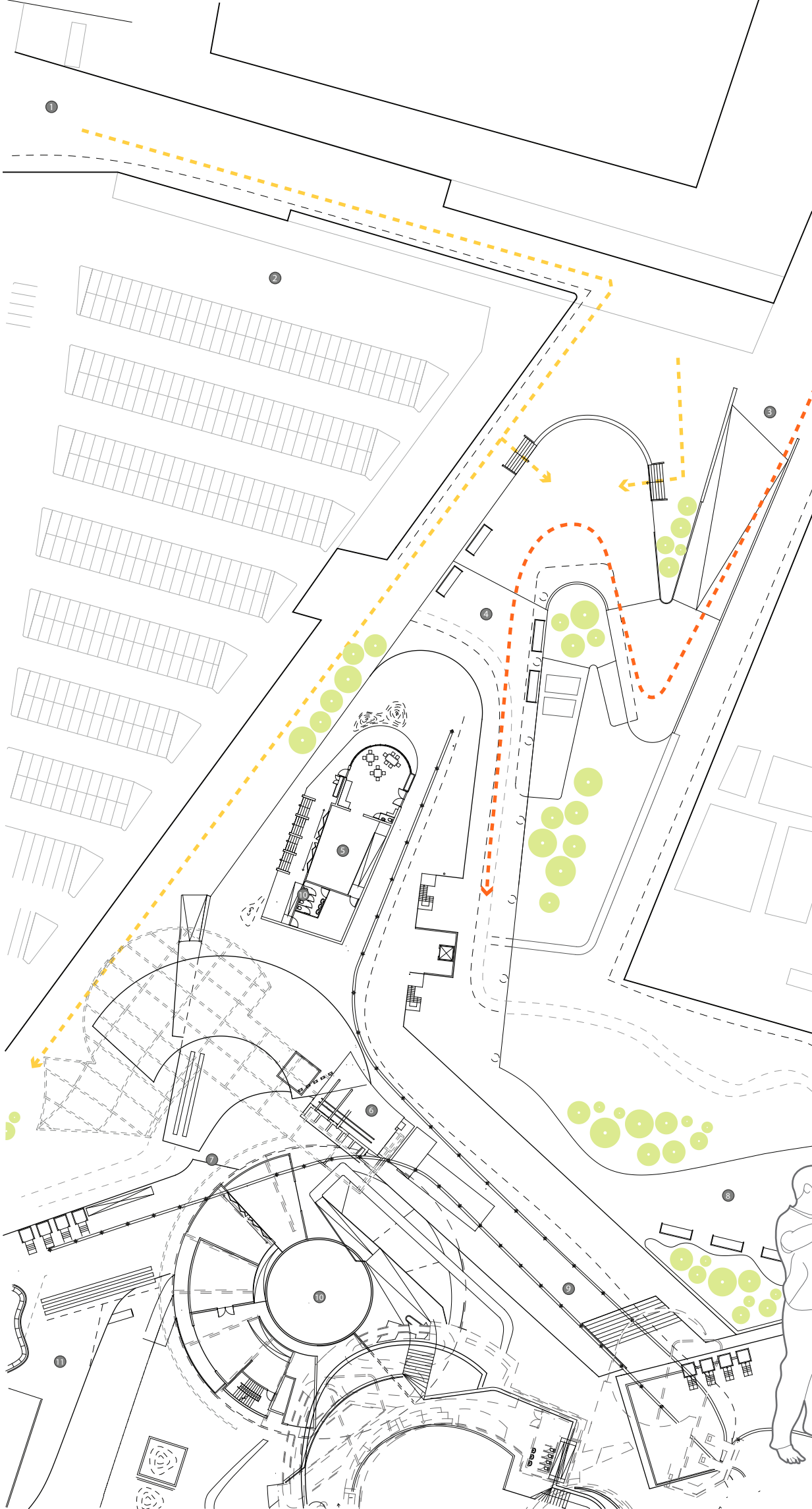
Main materials for the collective building and 3D printing process are delivered from this edge of the site.

There is public and shared park space with areas for watching the printers.

A timetable for the education center classes can be found with the opening times.

---> Route from Lingotto

---> Route from Station



SOUTH PARK

- ① Entrance
- ② Park Office
- ③ Food Vendor
- ④ Tailor Studio
- ⑤ Public deck
- ⑥ East Entrance
- ⑦ Park
- ⑧ Recycling
- ⑨ Export route
- ⑩ Public space
- ⑪ Garden

The South park is accessible from the main roads Passo Ruole and Via Nizza.

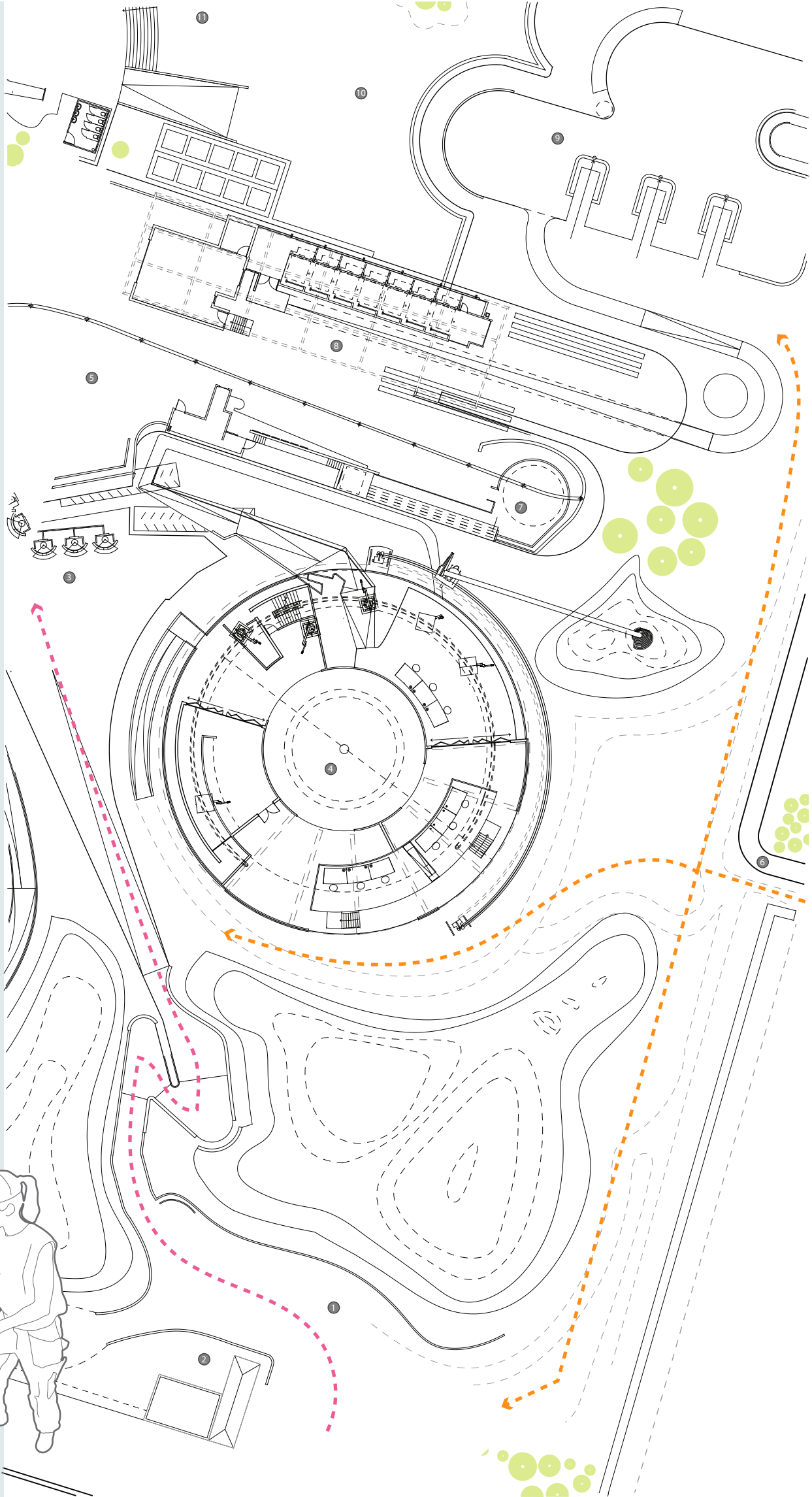
This edge of the park has the main 3D printing studios and material piles.

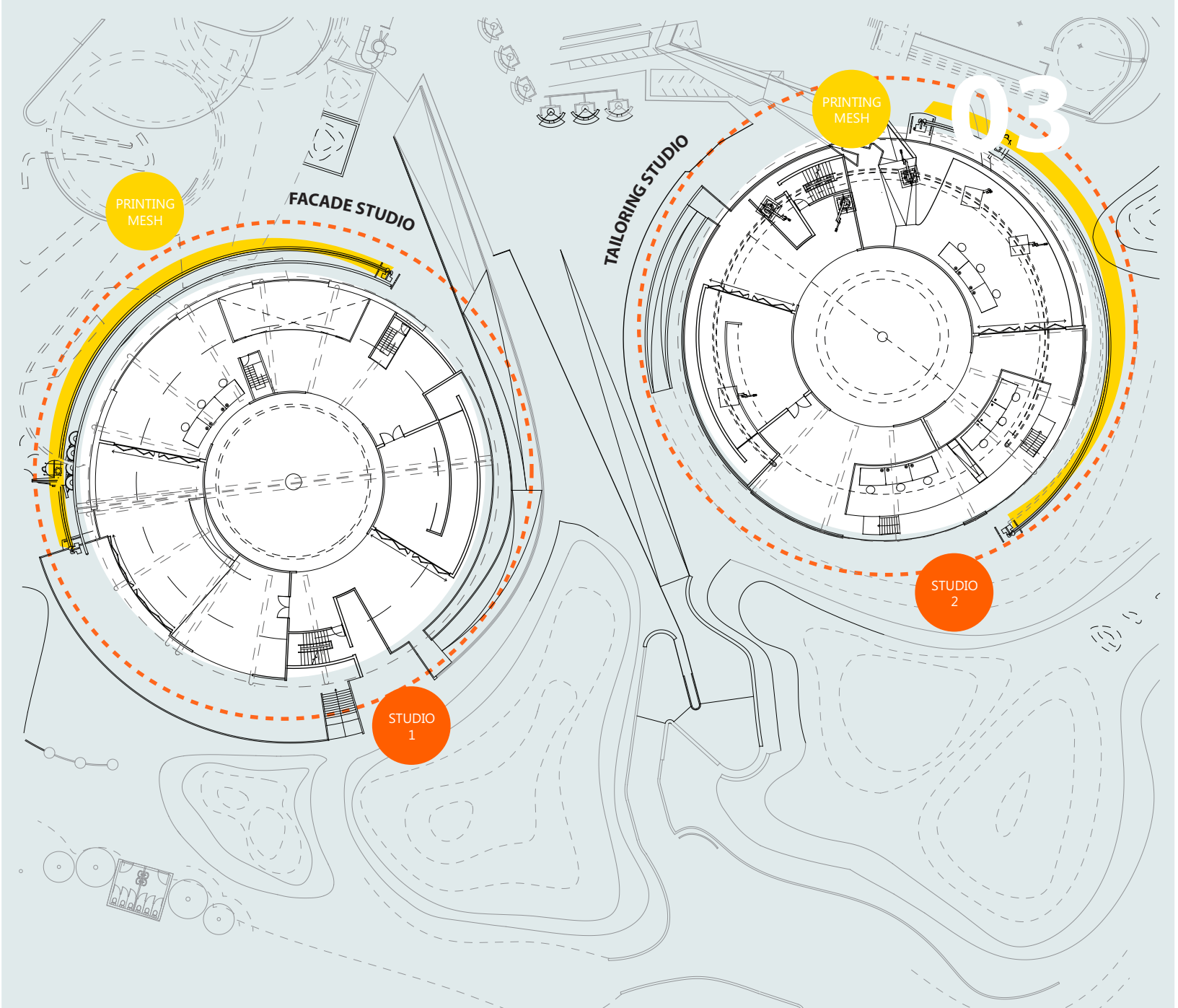
At the top of the welcome route are automated food vendors where visitors have access to refreshments.

The recycling process can be watched from the top edge of the shared park area.

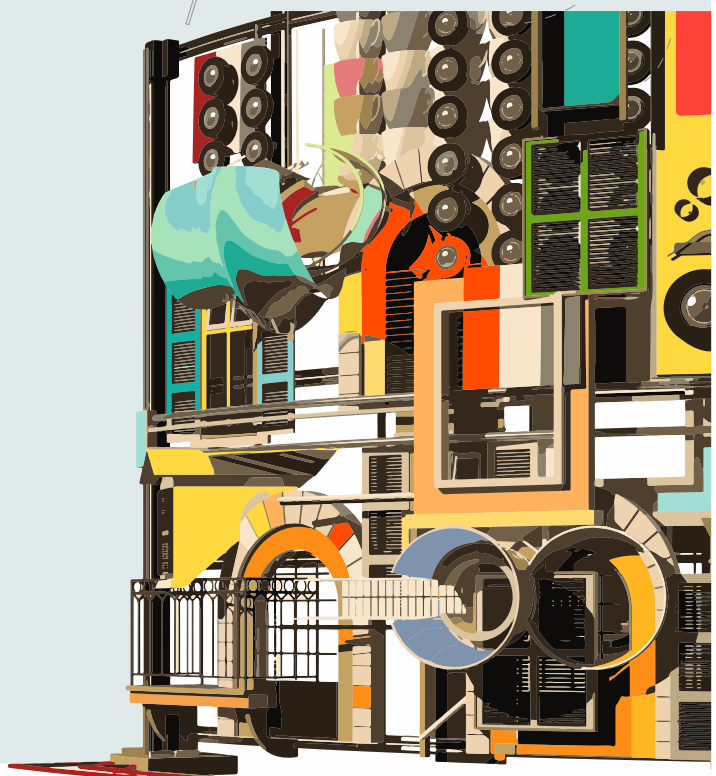
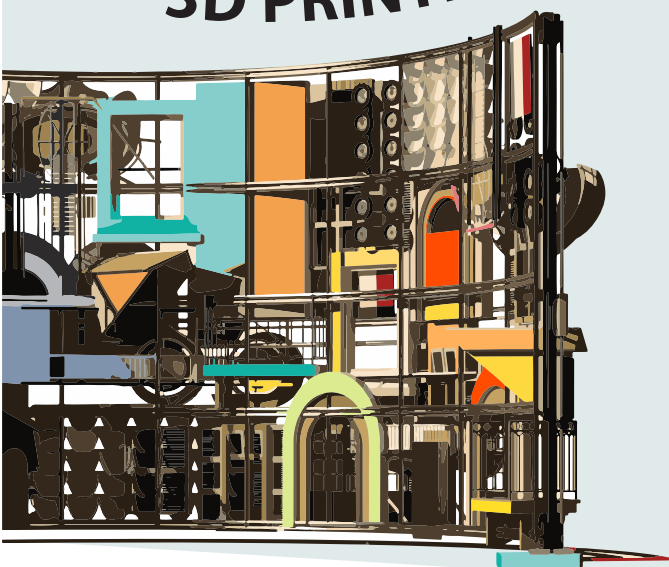
---> Route from Passo Ruole

---> Route from Via Nizza





3D PRINTING THE CITY

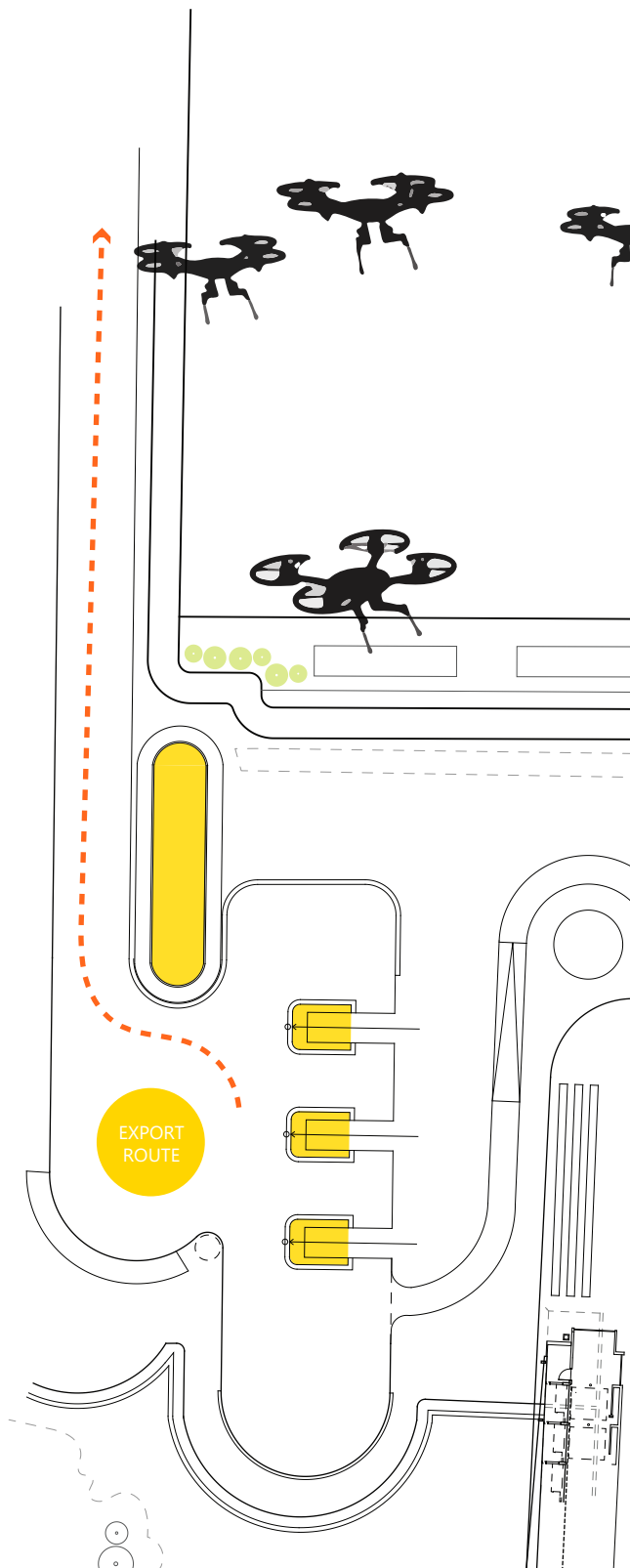


The center of the makers collective has an assembly center. Certain components are fed through the center and taken by drones.

Main visitors entrance to the Collective. This edge of the site has visitor information boards and takes people up to the welcome deck. Groups and visitors often take this route upon arrival.

The sorting and export area is at the East side of the site. It links the makers collective to the existing city.

Components and materials can be imported and exported from this side of the site. This area is connected to the recycling and sorting center.



TORINO WIRELESS



